

### **Is my water safe?**

During the calendar year of 2021, your tap water met ALL U.S. Environmental Protection Agency (EPA) and the State of Washington drinking water health standards. City of Newport employees work vigilantly to provide you with safe drinking water and once again we are proud to report that our water system has been in perfect compliance and had no violations.

### **Where Does My Water Come From?**

The City of Newport produces its water from a groundwater source using drilled wells at various locations throughout the city. Our facilities provided millions of gallons of clean drinking water to our customers in 2021.

### **Community Participation**

Customers are invited to participate in our City Council meetings and voice any concerns or questions about your drinking water. We meet the first and third Monday of each month beginning at 6 p.m. at City Hall Council Chambers, 200 S. Washington Avenue, Newport, WA.

### **Important Health Information**

Some people may be more vulnerable to contaminants in drinking water than the general population. Immunocompromised persons such as persons with immune system disorders, some elderly and infants may be particularly at risk from infections. These people should seek the advice about drinking water from their health care providers. EPA/Centers for Disease Control (CDC) guidelines on appropriate means to lessen the risk of infection by *Cryptosporidium*, *COVID - 19* and other microbial contaminants are available from the Safe Drinking Water Hotline (800-426-4791).

### **Serving Our Community**

We are once again proud to present our Annual Water Quality Report (Consumer Confidence Report) as required by the Safe Drinking Water Act (SDWA). This report covers all testing performed between January 1 and December 31, 2021. Over the years, we have dedicated ourselves to producing drinking water that meets all state and federal standards. We continually strive to adopt new methods for delivering the best quality drinking water to you. As new challenges to drinking water safety emerge, we remain vigilant in meeting the goals of source water protection, water conservation and community education while continuing to serve the needs of all our water users.

Please share with us your thoughts or concerns about the information in this report. After all, well informed customers are our best allies.

### **Information on Lead**

If present, elevated levels of lead can cause serious health problems, especially for pregnant women and young children. Lead in drinking water is primarily from materials and components associated with service lines and home plumbing. City of Newport is responsible for providing high quality drinking water but cannot control the variety of materials used in plumbing components. Information on lead in drinking water, testing methods and steps you can take to minimize exposure is available from the Safe Drinking Water Hotline or at <http://www.epa.gov/safewater/lead>.



For additional information or questions contact Abby Gribi, City Administrator  
200 S. Washington Ave. Newport, WA 99156  
509-447-5611

Annual

# Water Quality Report

Reporting Year 2021

Presented by the City of  
Newport



## Sampling Results

During the past year, City water crews have taken dozens of water samples throughout our community in order to determine the presence of any radioactive, biological, inorganic, volatile organic or synthetic contaminants in the City's drinking water. The tables below show those contaminants that were detected in the water. The State of Washington requires the city to monitor for certain substances less often than once per year because the concentrations of these substances do not change frequently. These sample cycles vary in duration based on State mandated guidelines. In these cases, the most recent sample data is included, along with the year in which the sample was taken. For the City of Newport, the most recent sample data that included any detected amounts of contaminants was from 2021.

SUBSTANCES REGULATED							
SUBSTANCE	UNIT OF MEASURE	YEAR SAMPLED	SRL	MCL	AMOUNT DETECTED	VIOLATION	LIKELY SOURCE OF CONTAMINATION
Arsenic	mg/L	2021	0.0014	0.01	.00279	No	Naturally present in the environment
Nitrate N	Mg/L	2021	10	10	1.32	No	Erosion of natural deposits. Discharge from fertilizer and aluminum factories
Total Nitrate/Nitrite-N	mg/L	2021	10	10	1.7595	No	Runoff from fertilizer use, leaching from septic tanks, sewage, erosion of natural deposits
Tap water samples were collected for Lead and Copper analysis from sample sites throughout the community							
Copper	mg/L	2021	0.02	1.3	.00955	No	Corrosion of household plumbing systems, erosion of natural deposits
Lead	mg/L	2021	0.001	0.015	ND	No	Corrosion of household plumbing systems. Erosion of natural deposits
Disinfection Byproducts							
Hardness	mg/L	2021	10	N/A	205.3	No	Inorganic contaminants such as salts and metals, naturally occurring, as measured in drinking water
Trihalomethane (THM)	mg/L	2021	N/A	80	.540	No	Disinfectants used to treat contaminants in drinking water
Halo-Acetic Acids (HAA5)	mg/L	2021	1 to 2	60	ND	No	Naturally occurring organic matter found in drinking water

### Definitions:

**AL (Action Level)** The concentration of a contaminant which, if exceeded, triggers treatment or other requirements that a water system must follow.

**MCL (Maximum Contaminant Level)** The highest level of a contaminant that is allowed in drinking water. MCL's are set as close to the MCLG's as feasible using the best available treatment technology.

**MCLG (Maximum Contaminant Level Goal)** The level of a contaminant in drinking water below which there is no known or expected risk to health. MCLG's allow for a margin of safety.

**MFL (Million Fibers per Liter)** The measure of the presence of asbestos fibers that are longer than 10 micrometers.

**MRDL (Maximum Residual Disinfectant Level)** The highest level of a disinfectant allowed in drinking water. There is convincing evidence that addition of a disinfectant is necessary for control of microbial contaminants.

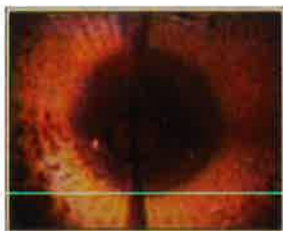
**SRL (Minimum reporting level for Washington Department of Health)**

**ND (Non-Detects)** Laboratory analysis indicates that the constituent is not present.

**ppb (parts per billion)** One part substance per billion parts water (or micrograms per liter).

**ppm (parts per million)** One part substance per million parts water (or milligrams per liter).

*This year, 2022, the City of Newport's water system is in the process of bringing new life to our wells, this is being accomplished by the services of Water Recovery Services Inc. The cleaning removes build up on the well casings, screens and pump. This allows us to gain more water production and a greater quality of water from the existing wells. This year we are planning on cleaning 2 of our 9 wells, The City of Newport has already done this cleaning on one of our wells and have seen a significant improvement in water production.*



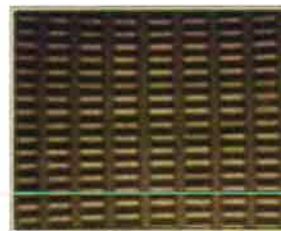
Before Aqua Freed Treatment

(looking down into well)



After Aqua Freed Treatment

(looking down into well)



After Aqua Freed Treatment

(view of side wall)

### What Does All Of This Mean?

As you can see by the table, our system had no violations or exemptions in the reporting year. We're proud that the water you are drinking meets or exceeds all Federal and State requirements. The EPA has determined that your drinking water is SAFE at these levels. The City of Newport constantly monitors for various contaminants in the water supply to meet all regulatory requirements.

In order to maintain a safe and dependable water supply we sometimes need to make improvements to the water system that will benefit all of our customers. These improvements are sometimes reflected as part of the periodic rate adjustments in your water bill that help fund these upgrades.

*Thank you for allowing us to continue to provide clean, quality water to you and your family.*